

The Pacific Geospatial and Surveying Council Strategy 2017-2027



Geospatial information underpins the majority of economic and sustainable development activities in the world today. The services provided by Pacific Island geospatial scientists and surveyors contribute to the security and well-being of Pacific people, supporting numerous industries and sectors.

Positioning Pacific Island Countries and Territories for the Future

“ We fully realize the importance of critical geospatial infrastructure and information in helping countries and decision-makers make more informed, evidence-based decisions on mitigation and preparedness. ”

- Ambassador Peter Thomson, Fiji's
Permanent Representative to the UN,
26 Feb 2015

The Pacific Geospatial and Surveying Council Strategy highlights the development priorities of Pacific Lands and Survey, Geospatial Management, and Hydrographic Departments and provides the strategic context and direction for strengthening the capacities and services of these agencies.

Our Vision

Sustainable development in the Pacific enabled by world-class geospatial information and surveying services.

Following its establishment in 2014, the Pacific Geospatial and Surveying Council (PGSC) developed and adopted this Strategy to guide the development of geospatial and surveying services over the next decade. The ultimate aim of the strategy is to ensure that National Lands & Survey Departments, Hydrography Offices, and Geospatial Units can fulfil their responsibilities and expand their capabilities.

Purpose of the Strategy

1. Demonstrate the critical nature of geospatial and surveying information and services and the development and maintenance of these services in the Pacific region;
2. Articulate the collaborative aspirations of the region’s geospatial and surveying professionals in advancing capacity;
3. Guide the development of sustainable geospatial and surveying information and services in Pacific Island Countries and Territories, and;
4. Serve as an entry point for engagement with internal and external partners.

Partnerships for Progress on Shared Goals

Partnerships are critical to the successful implementation of this Strategy. The responsibilities of regional surveyors and geospatial managers frequently correspond to broader initiatives, which all contribute toward achievement of sustainable development goals. The PGSC relies upon these relationships and is an important contributor toward global efforts to improve positioning and geospatial information management.

The PGSC acknowledges the particular importance of aligning actions under this Strategy with the Framework for Resilient Development in the Pacific (FRDP), the Framework for Pacific Regionalism, and other key Pacific regional initiatives.

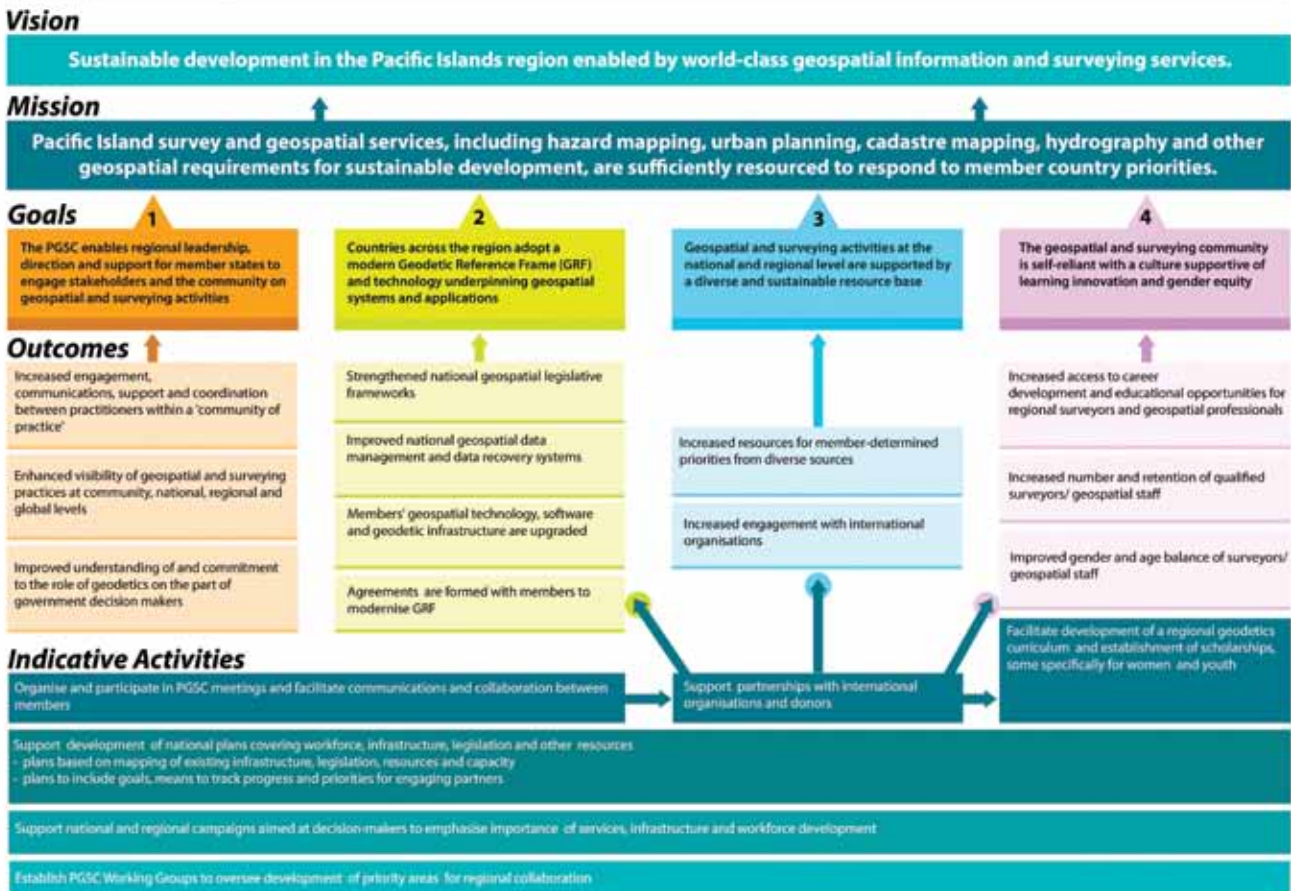


Four Key Strategic Goals for the Region

Goal 1	Goal 2	Goal 3	Goal 4
			
<p>Leadership The PGSC enables regional leadership, direction and support for member states to engage stakeholders and the community on geospatial and surveying activities.</p>	<p>Standards and Technology Countries across the region adopt a modern Geodetic Reference Frame (GRF) and technology underpinning geospatial systems and applications.</p>	<p>Sustainability Geospatial and surveying activities at the national and regional level are supported by a diverse and sustainable resource base.</p>	<p>Capacity Building The geospatial and surveying community is self-reliant with a culture supportive of learning, innovation and gender equity.</p>

Contributing to each goal are a series of outcomes. These outcomes will be achieved by indicative activities implemented at the national, regional, and international level. The goals, outcomes and activities are supported by existing institutional partnerships that bring together Pacific Islands and development partners in support of geospatial and surveying services. This is outlined in the Theory of Change diagram below:

Theory of Change



Turning Strategy into Action

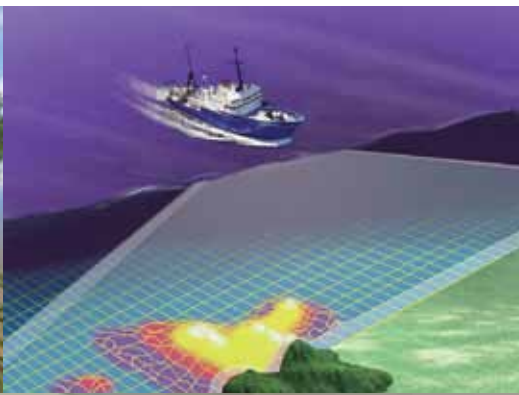
Implementation of the strategy will be carried out by institutions and groups including Pacific Island governments, regional organisations, private sector, educational institutions, professional groups and of course, development partners.

Monitoring, Evaluating and Learning from our Progress

Monitoring and evaluation of the activities and outcomes is an integral component of the Strategy. A set of performance questions has been developed in relation to the Strategy described above, to guide periodic evaluation of the connections between the work of the PGSC and expected outcomes. Based on these questions, PGSC members and PGSC Partnership Desk will report on progress at meetings of the PGSC.

A mid-term independent evaluation of the Strategy will be undertaken in 2022, to support revision and to enable the lessons learnt over the first five years to inform the second five years of activities.

A second independent evaluation will be carried out in 2027, at the end of the Strategy, to identify evidence of change overall and links to the efforts described in this Strategy. Selected questions from the lists below will be used in the terms of reference for the evaluations, subject to agreement at the time.



For More Information

Contact the Pacific Geospatial and Surveying Partnership Desk pgsc@spc.int

Visit <http://gsd.spc.int/pgsc>

